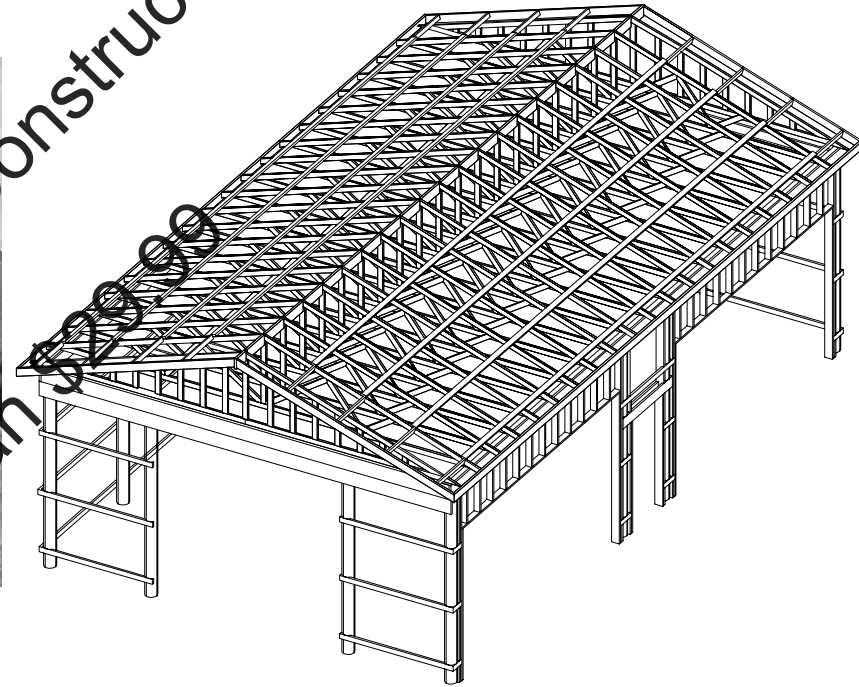


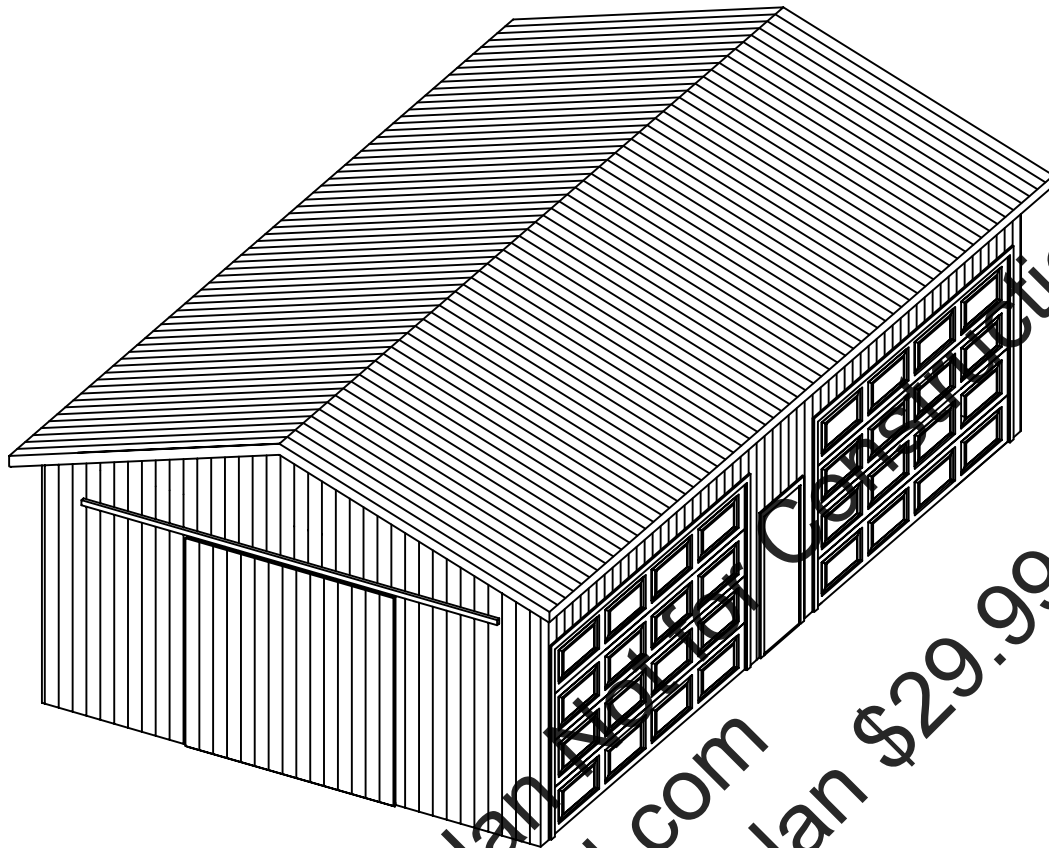
24'x40' POLE BARN STYLE 4 CAR GARAGE/SHOP



- 2-16'x9' GARAGE DOORS
- 1-10'x10' BIPARTING SLIDING DOOR
- OPTIONAL WINDOWS (DETAILS INCLUDED)

- FRONT AND BACK PERSONNEL ENTRY DOORS
- 4/12 PITCH ROOF
- METAL SIDING AND ROOF

Sample Plan Not for Construction
www.sdscad.com
Download full plan \$299.99



Sample Plan
www.sdscad.com
 Download full plan \$29.99

INDEX	
PAGE	DESCRIPTION
1	FRONT & RIGHT ELEVATIONS
2	BACK & LEFT ELEVATIONS
3	FLOOR PLAN
4	ELECTRICAL PLAN
5	SECTION A-A, VIEW A, H1 INSTALLATION
6	SECTION B-B, F-F, G-G
7	BIPARTING DOOR FRAME AND POST NOTCHING DETAILS
8	BACK ENTRY DOORWAY FRAME AND GARAGE DOOR FRAME DETAILS, SECT. D-D, H-H
9	SECTION C-C, E-E, OPTIONAL WINDOW FRAME ELEVATION DETAIL
10	FRONT ENTRY DOOR FRAME DETAILS
11	OPTIONAL POST FOOTING DETAILS
12	FRAME PICTORIAL, LPT4 INSTALLATION, H3 INSTALLATION, DOOR AND WINDOW SCHED.
13	SPECIFICATIONS
14	BILL OF MATERIALS

IDACAD

PAGE TITLE:
TITLE PAGE

PROJECT NO.:
2440-PB-GBL-3DR-001

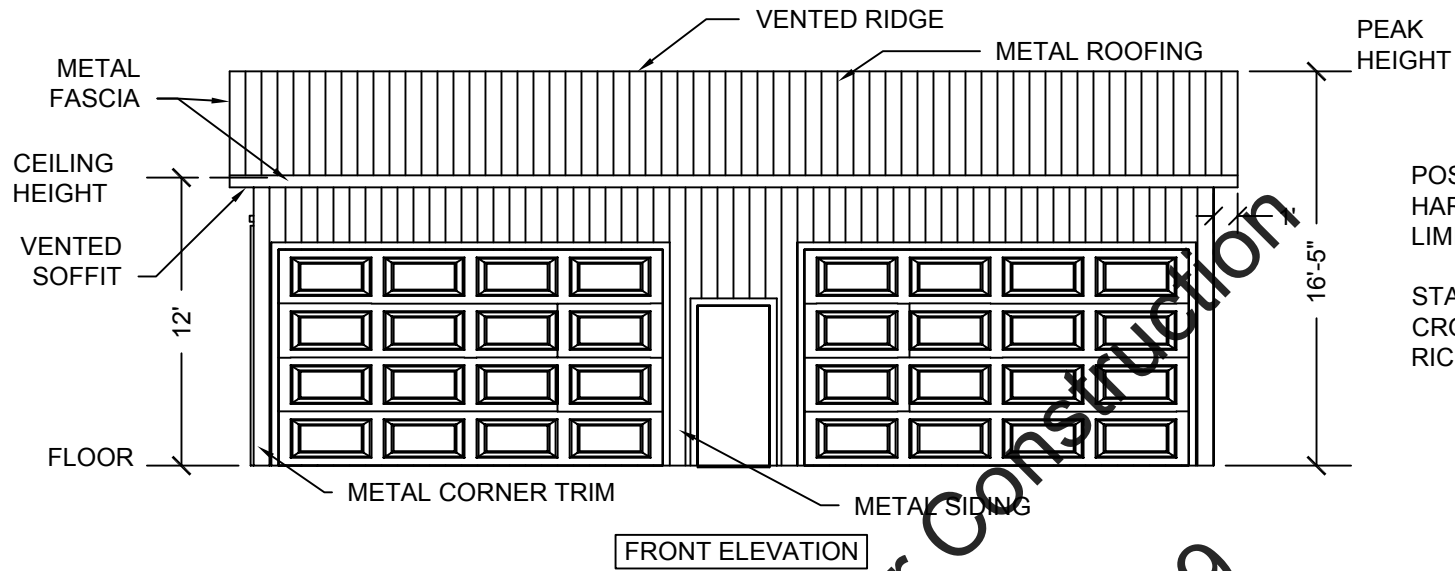
Drafting, Design Service
463 North State, Preston, Idaho 83263

COPYRIGHT 2003 IDACAD

PROJECT NAME
POLE BARN STYLE 4 CAR GARAGE/SHOP

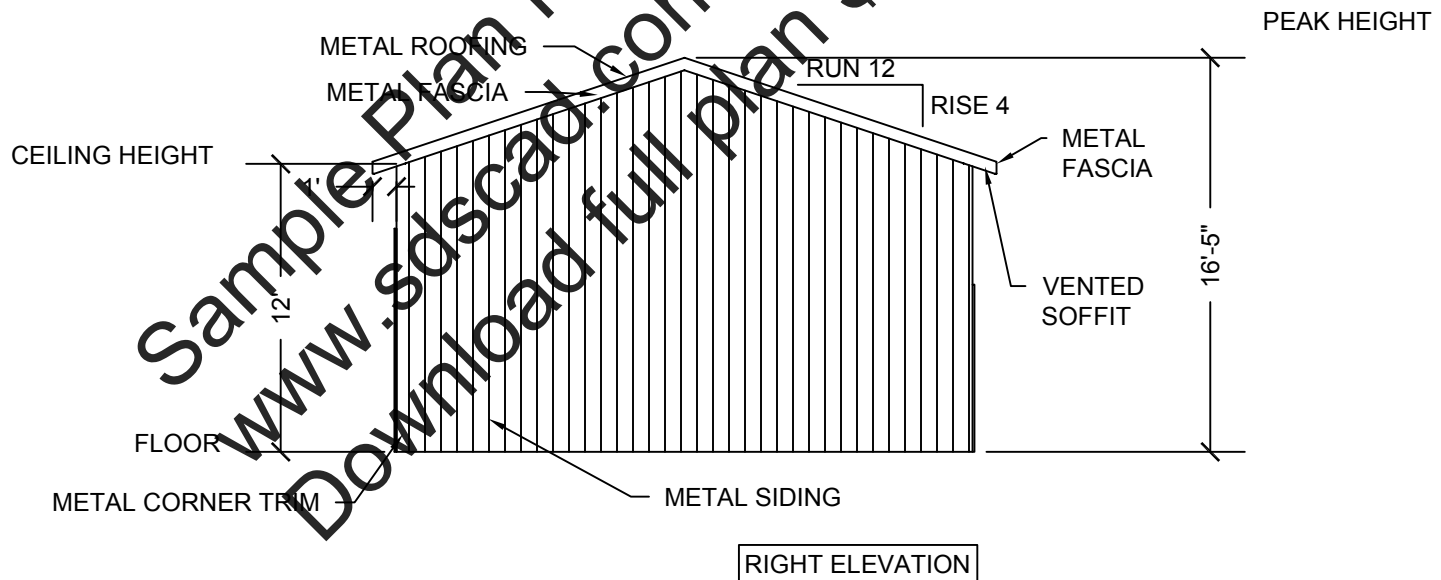
SCALE

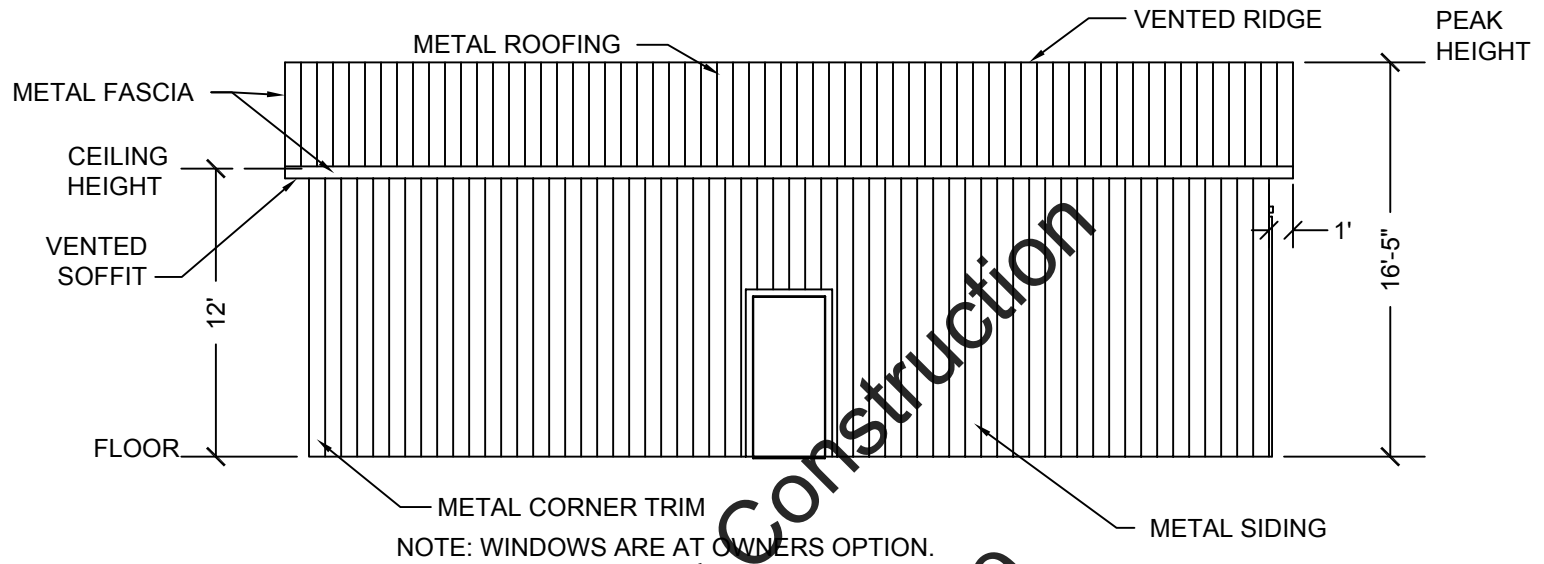
PAGE



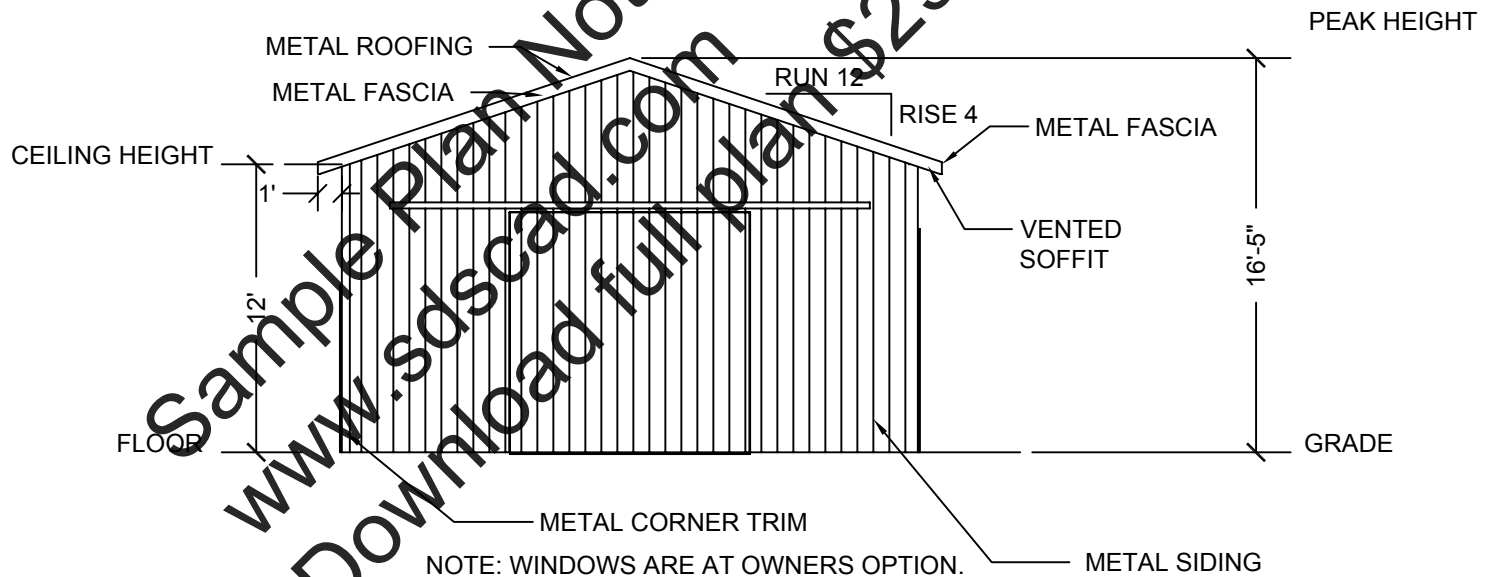
POSSIBLE SOURCES OF DOOR
HARDWARE INCLUDE BUT ARE NOT
LIMITED TO:

- STANLEY HARDWARE
- CROWN INDUSTRIAL
- RICHARDS-WILCOX, INC.

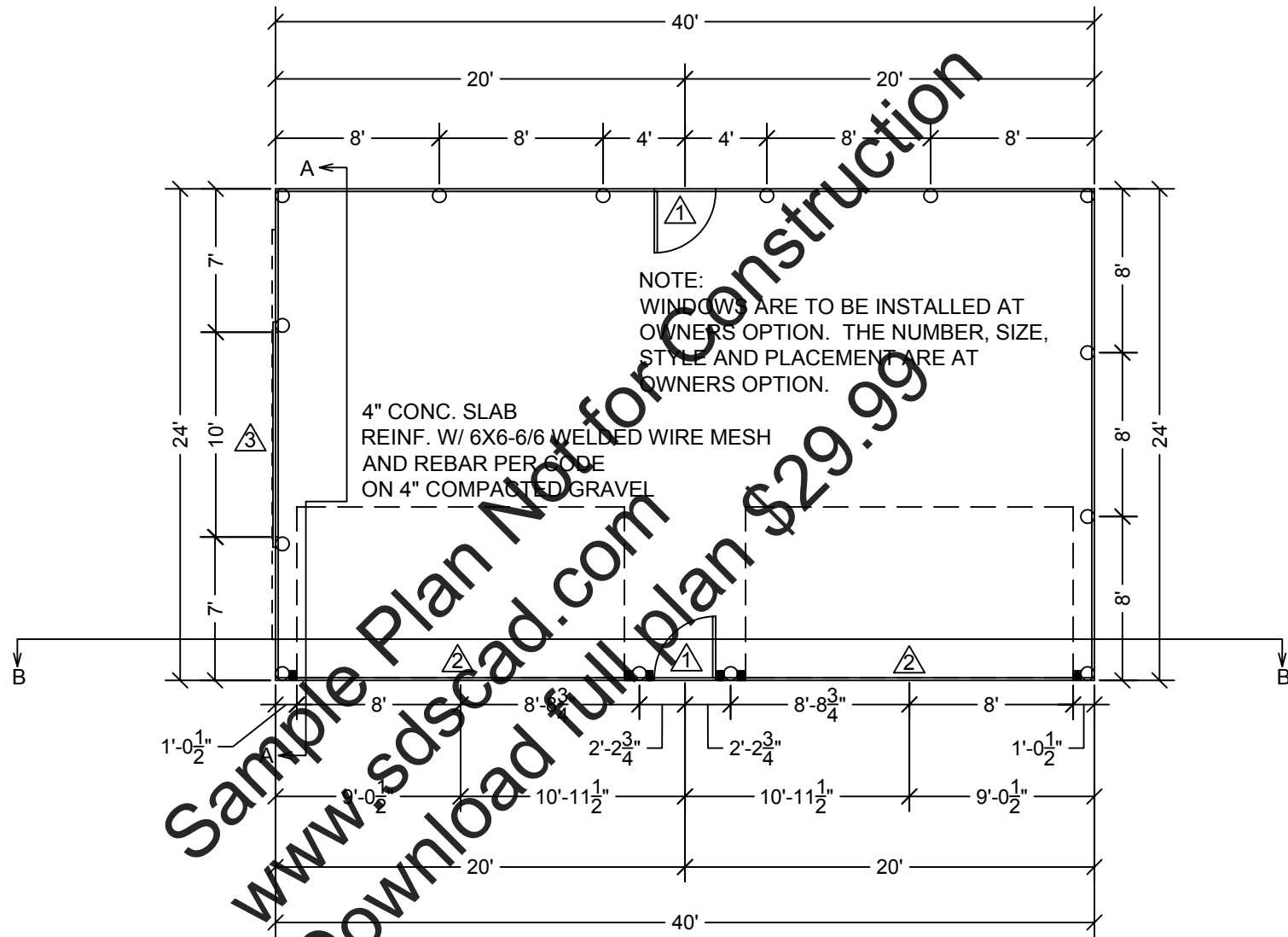




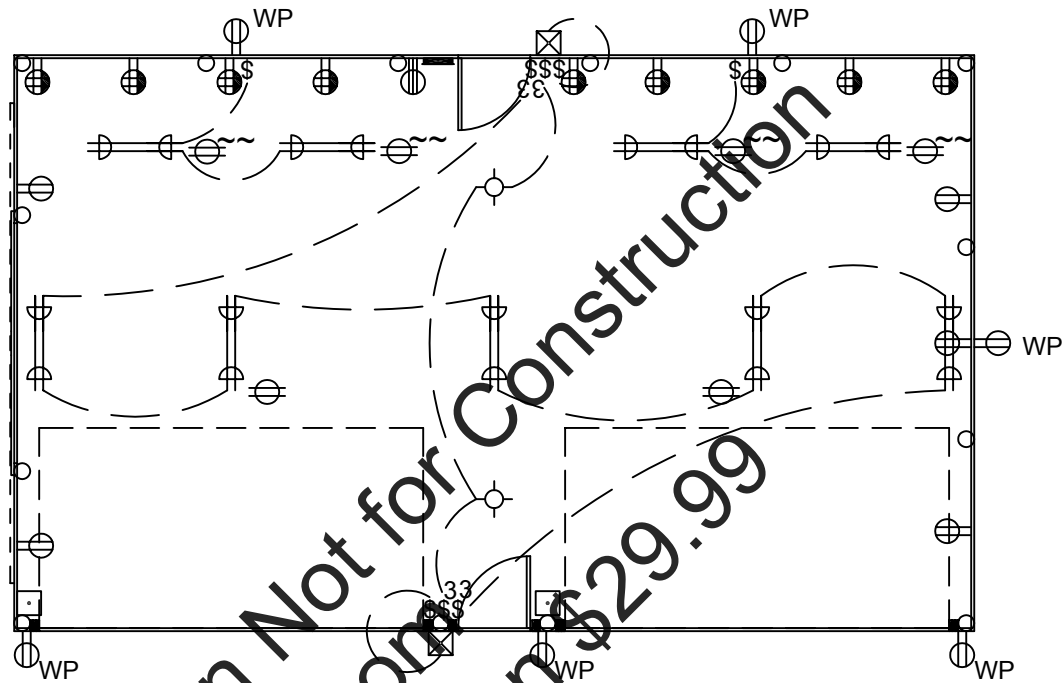
BACK ELEVATION



LEFT ELEVATION

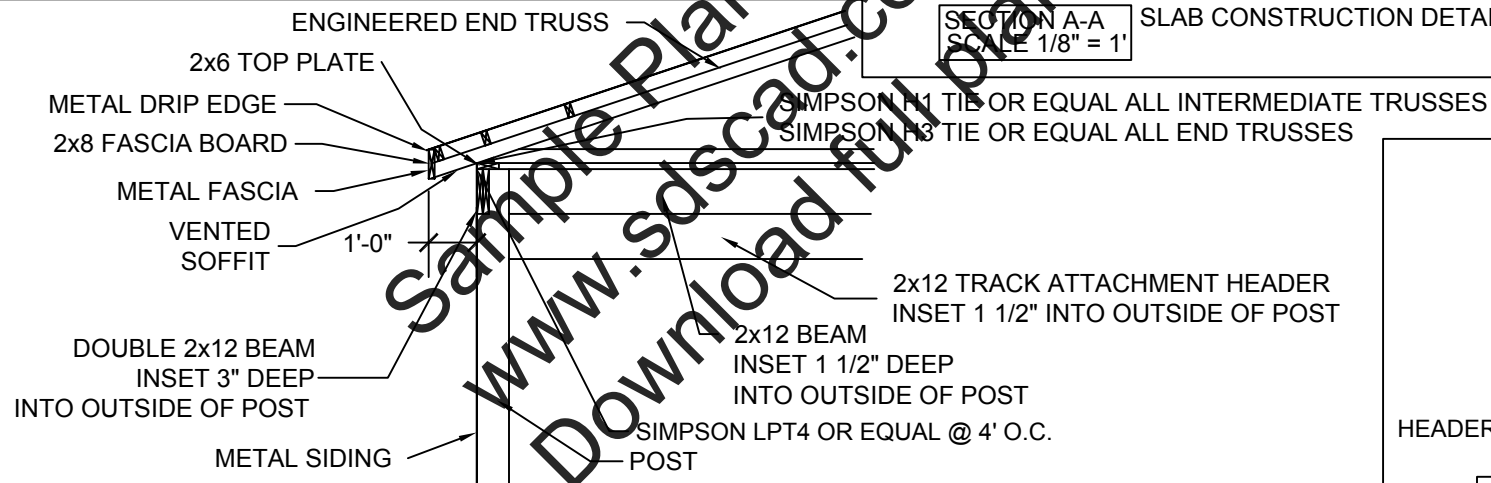
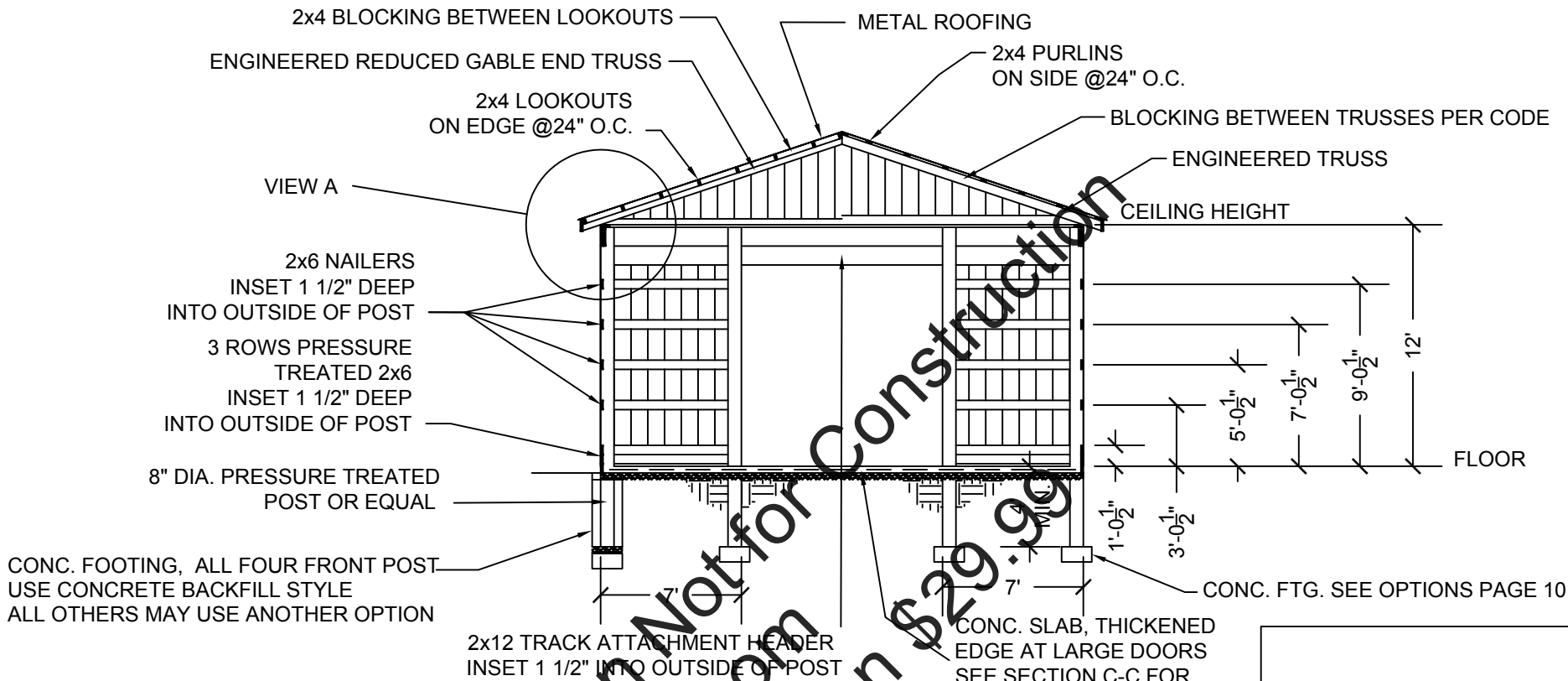


Sample Plan Not for Construction
www.sdscad.com
Download full plan \$29.99

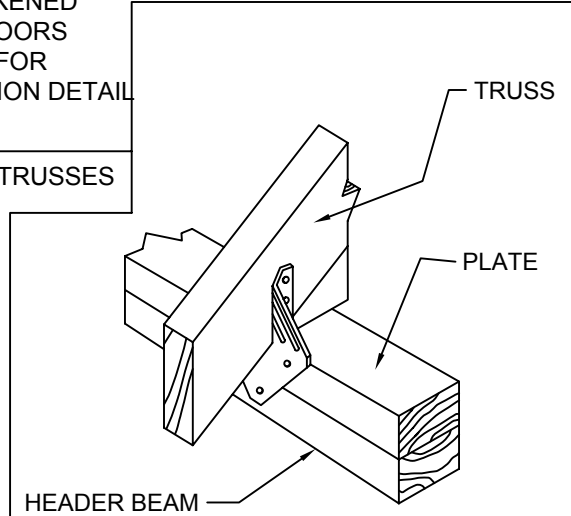


LEGEND

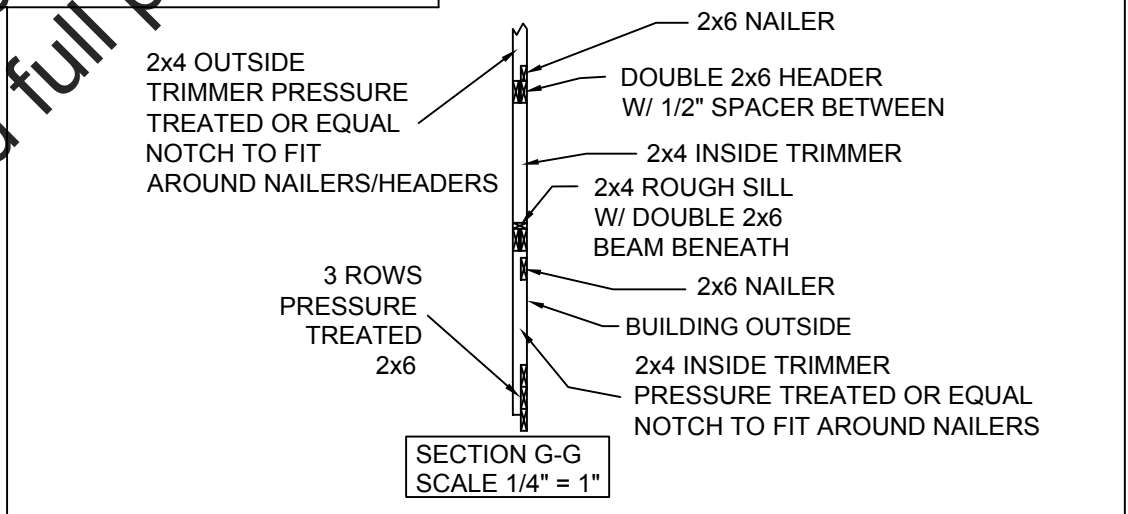
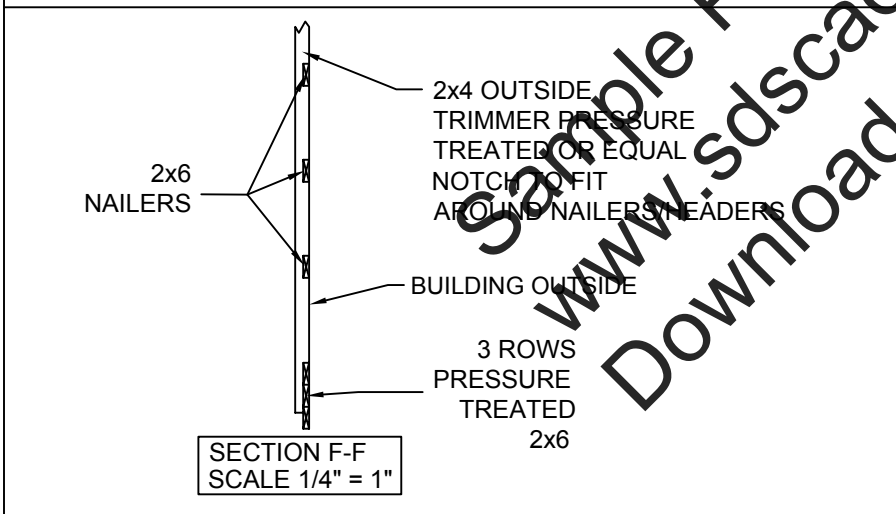
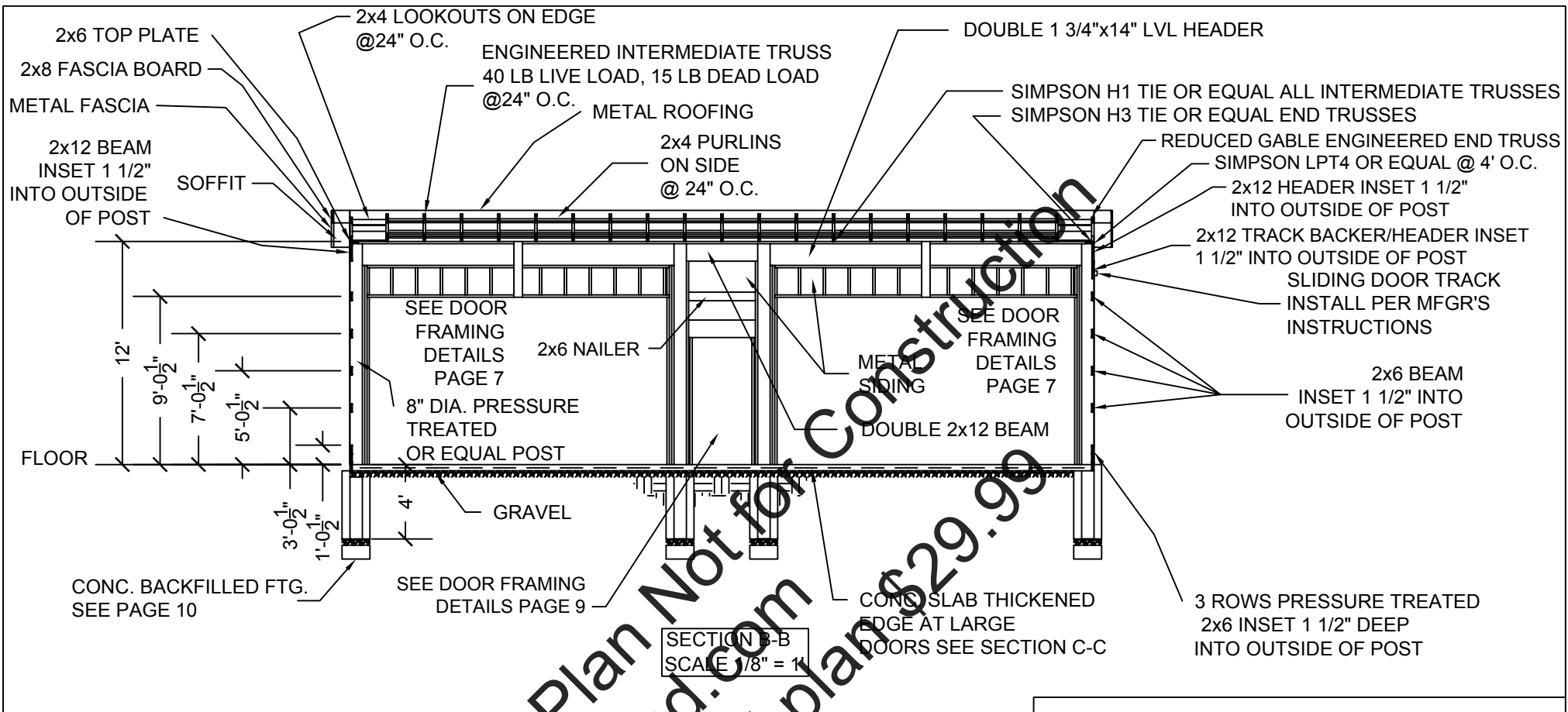
—	BREAKER BOX
⊕	220 VOLT OUTLET
⊕	110 VOLT OUTLET, SPLIT WIRED, QUADRUPLEX
⊕ WP	110 VOLT OUTLET, WEATHER PROOF
⊕	110 VOLT OUTLET
⊕	110 VOLT OUTLET, CEILING MOUNT
⊕ ~	110 VOLT OUTLET, CEILING DROP CORD
⊕	CEILING FAN/LIGHT
⊕	FLUORESCENT LIGHT
⊕	PORCH LIGHT
\$	LIGHT SWITCH
⊕	GARAGE DOOR OPENER SWITCH

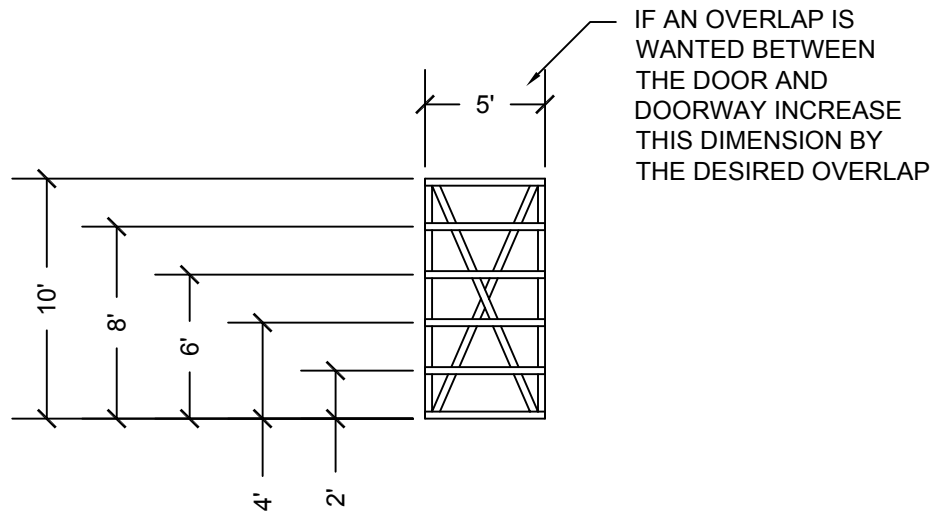


VIEW A
SCALE: 1/4" = 1"



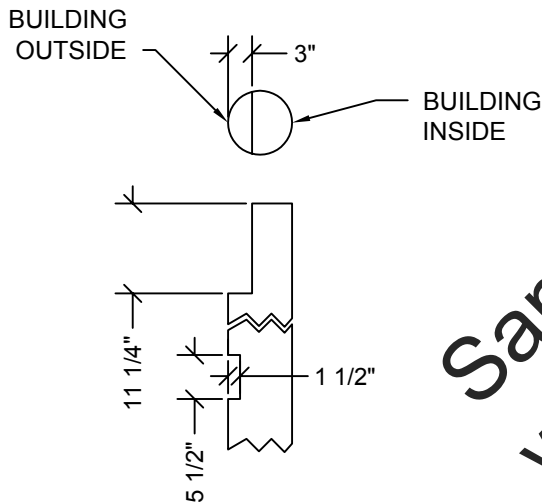
SIMPSON H1 INSTALLATION
SCALE: NTS



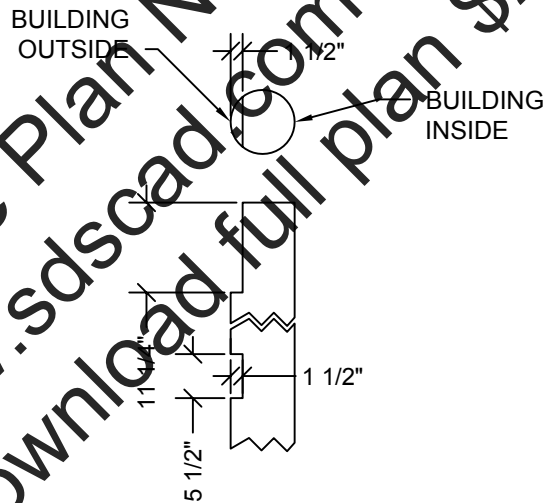


NOTE:
 ALL MATERIAL IS PRESSURE TREATED 2x4 OR EQUAL.
 ALL JOINTS ARE HALF LAP.
 GLUE ALL JOINTS WITH POLYURETHANE WOOD GLUE OR EQUIVALENT.
 USE RUST RESISTANT SCREWS ON ALL JOINTS.
 MAKE TWO IDENTICAL FRAMES.
 INSTALL DOORS WITH A MINIMUM 1" CLEARANCE AT THE BOTTOM.
 INSTALL ALL DOOR HARDWARE ACCORDING TO MFG'S INSTRUCTIONS.

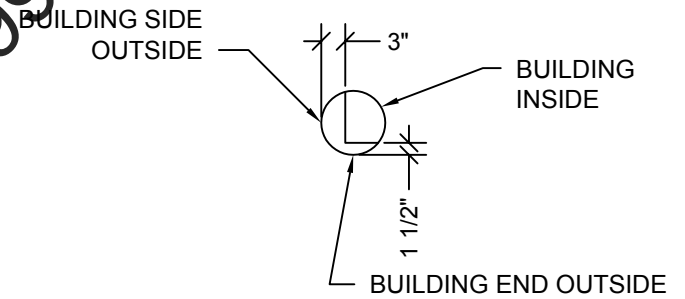
DOOR FRAME
 SCALE 1/8" = 1'



SIDE POST NOTCHING DETAIL
 SCALE 1/2" = 1'

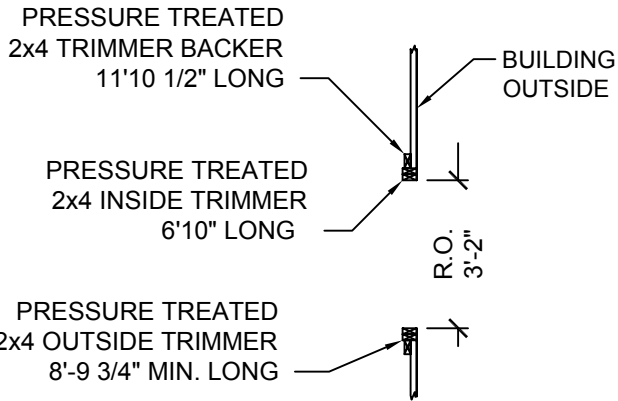


END POST NOTCHING DETAIL
 SCALE 1/2" = 1'

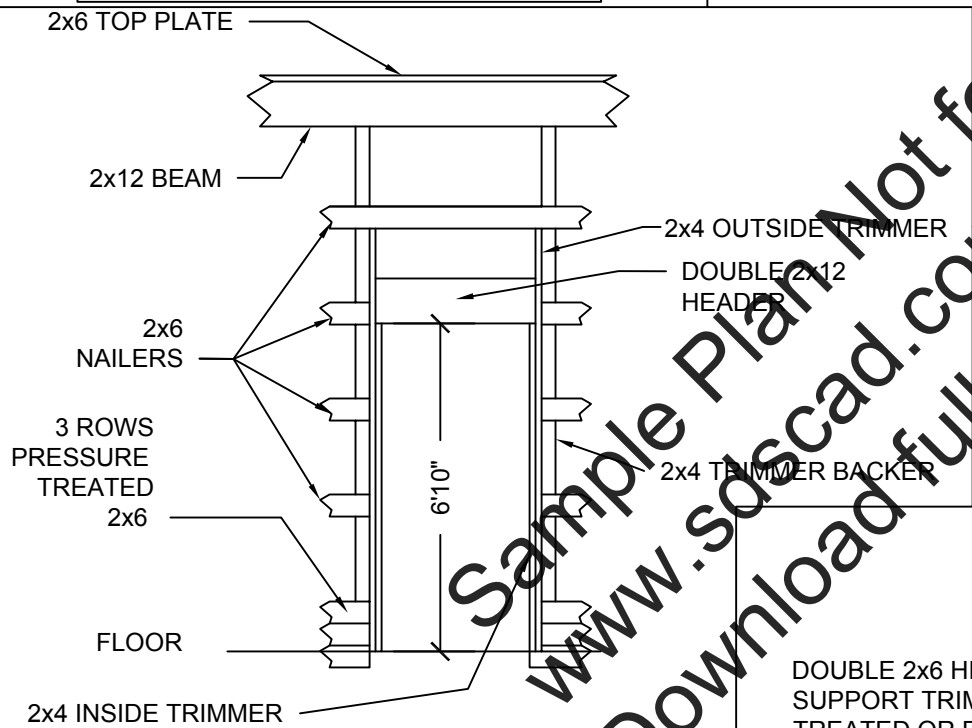


CORNER POST NOTCHING DETAIL
 SCALE 1/2" = 1'

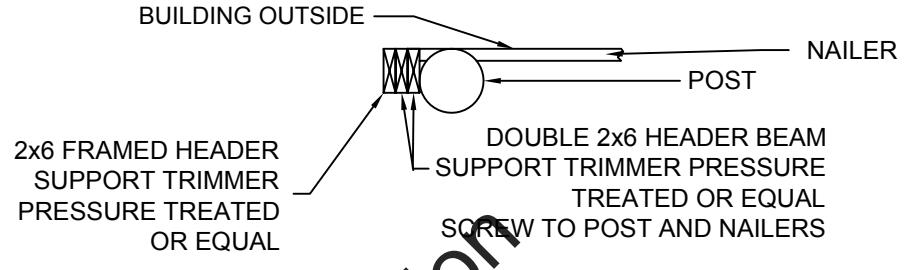
Sample Plan Not for Construction
 www.sdscad.com Download full plan \$29.99



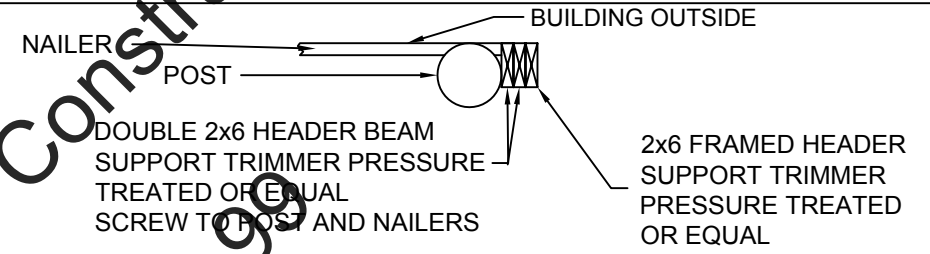
BACK ENTRY DOOR FRAME PLAN DETAIL
SCALE 1/4" = 1'



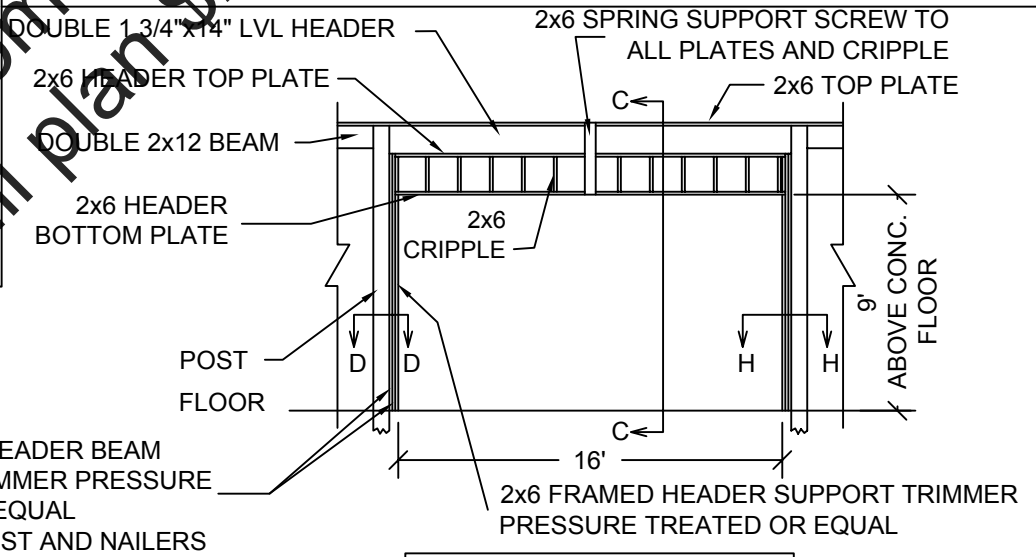
BACK ENTRY DOOR FRAME
ELEVATION DETAIL
SCALE 1/4" = 1'



SECTION H-H
SCALE 1/2" = 1'

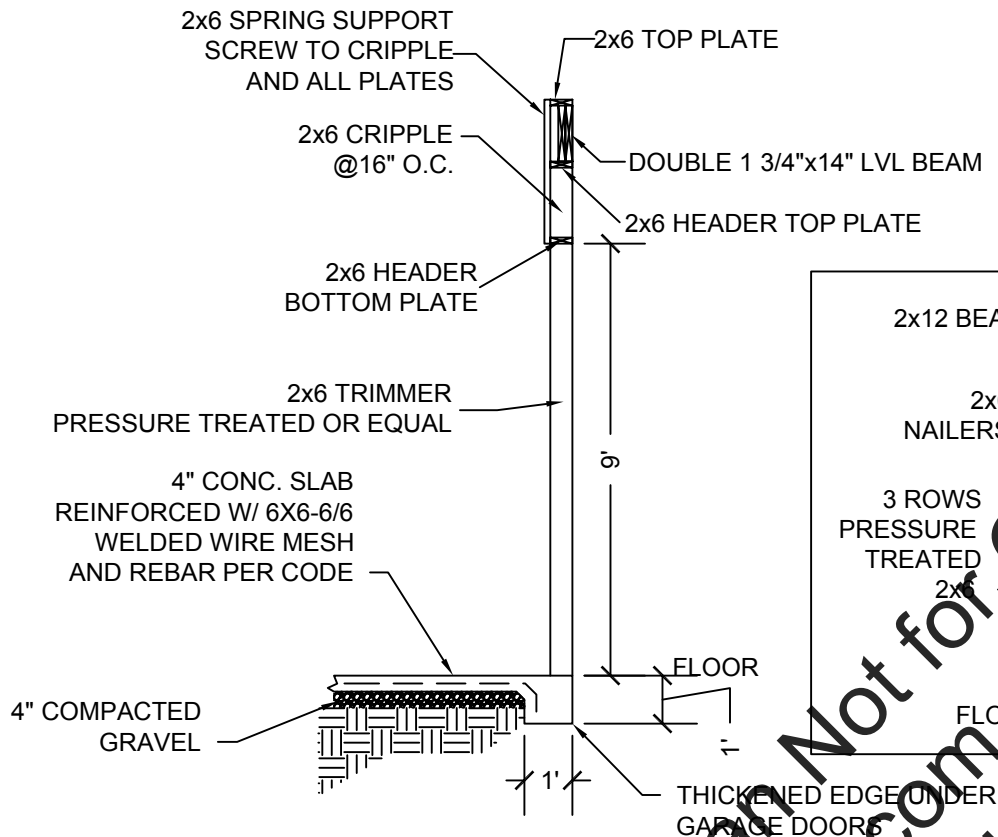


SECTION D-D
SCALE 1/2" = 1'

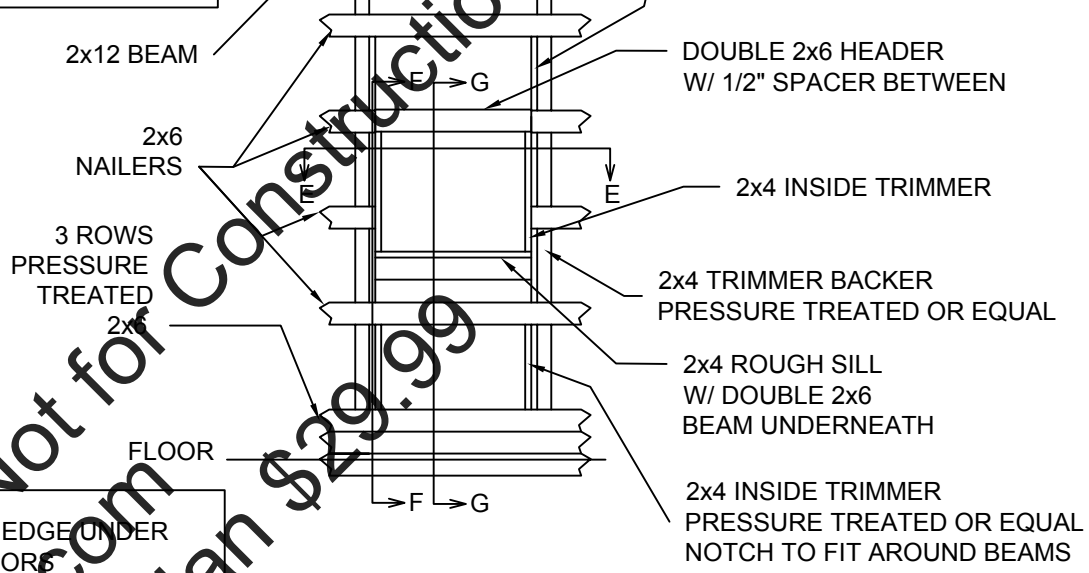


GARAGE DOOR FRAME DETAIL
(SECTION A-A VIEW)
SCALE 1/8" = 1'

Sample Plan Not for Construction
www.soscad.com
Download full plan \$29.99

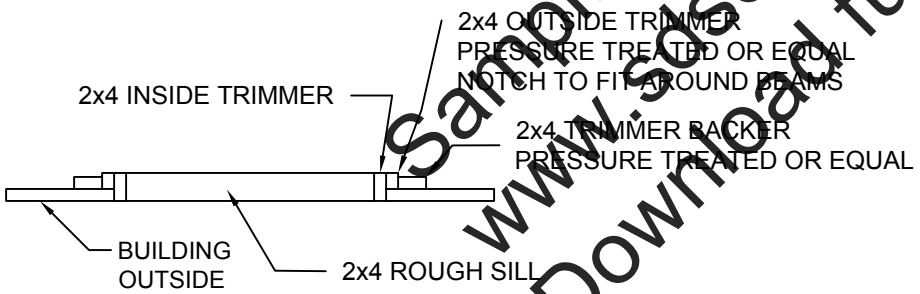


SECTION C-C
SCALE 1/4" = 1'

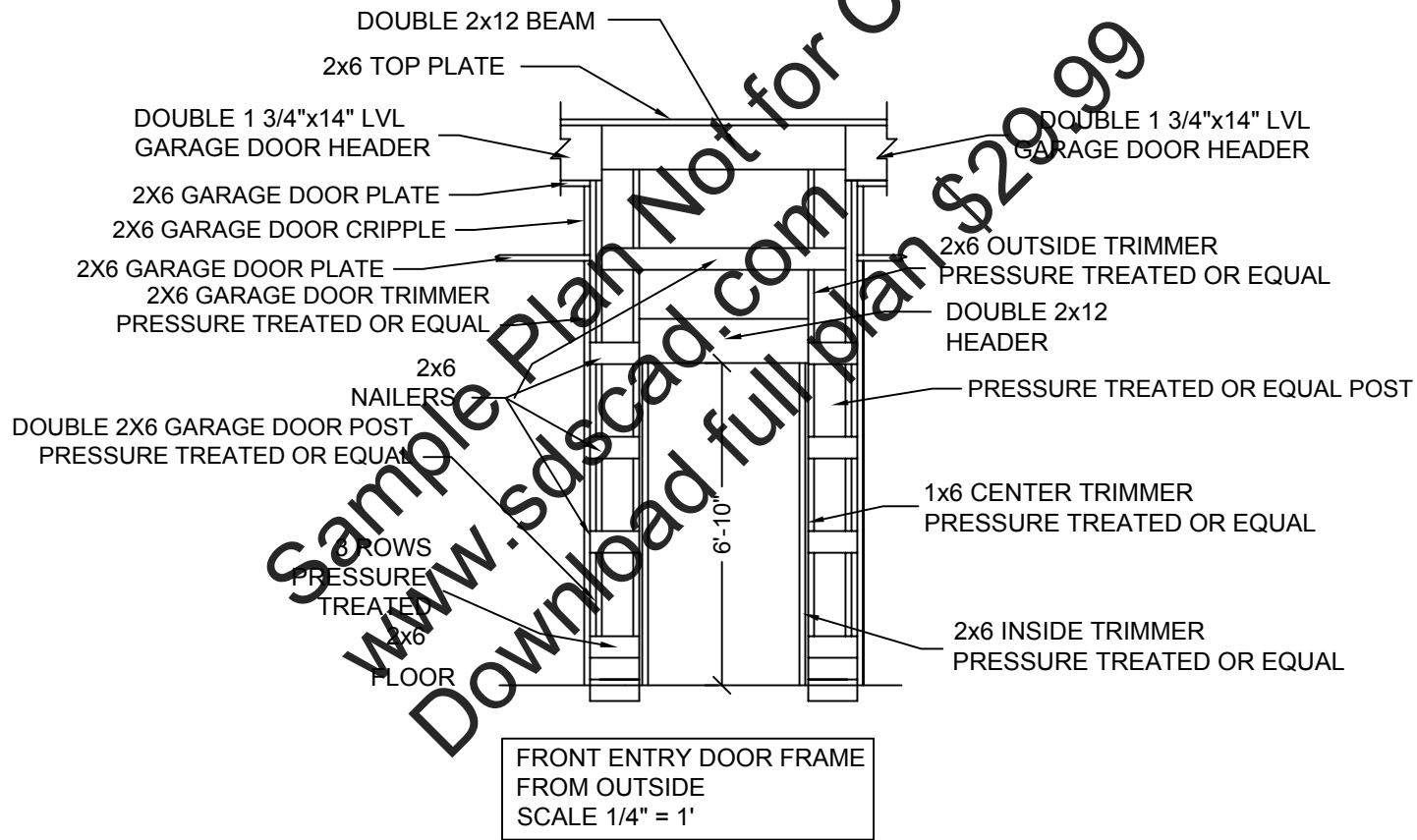
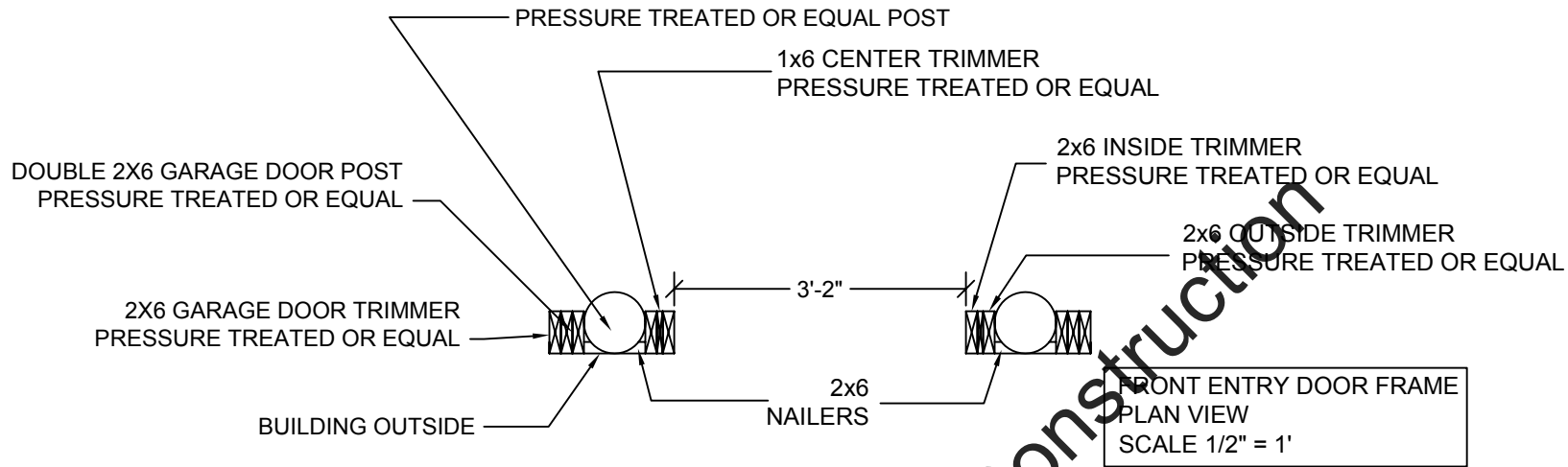


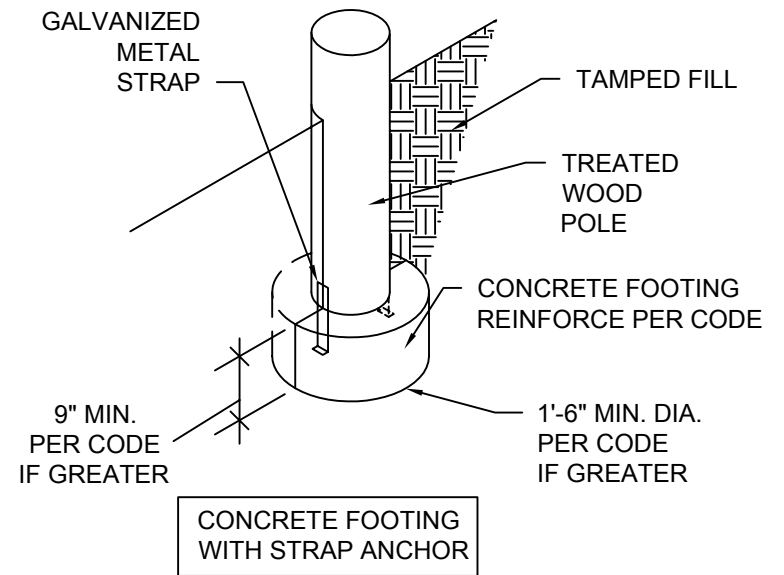
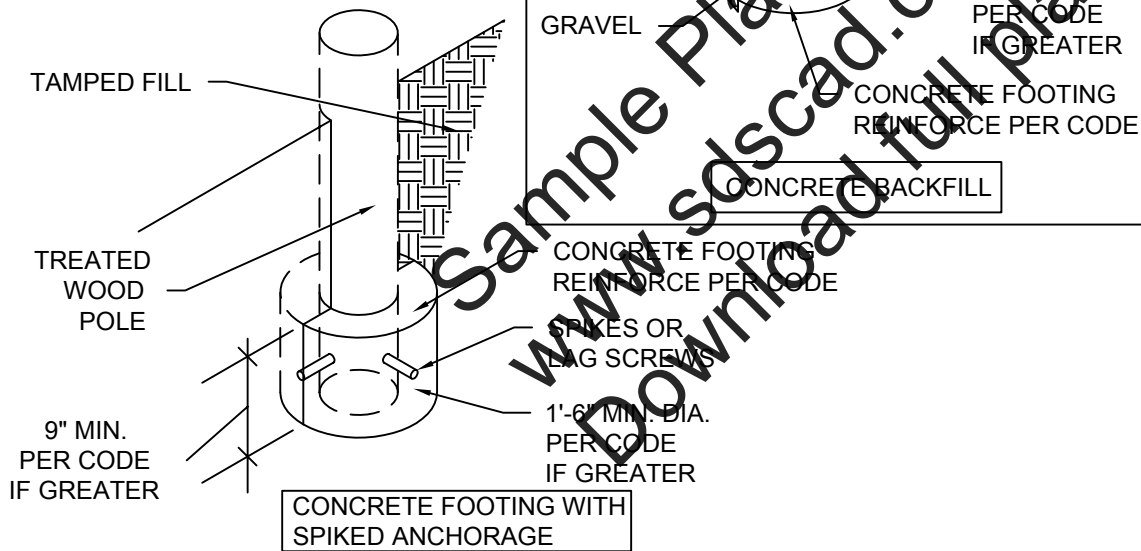
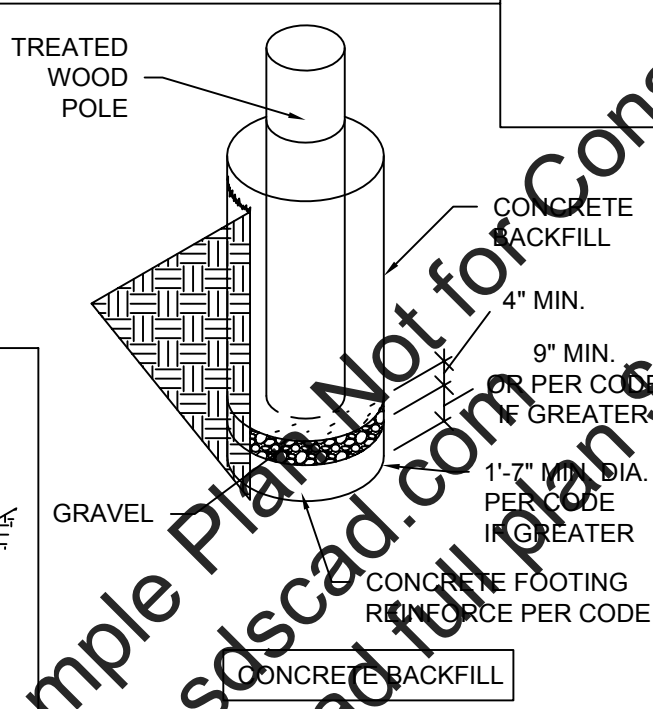
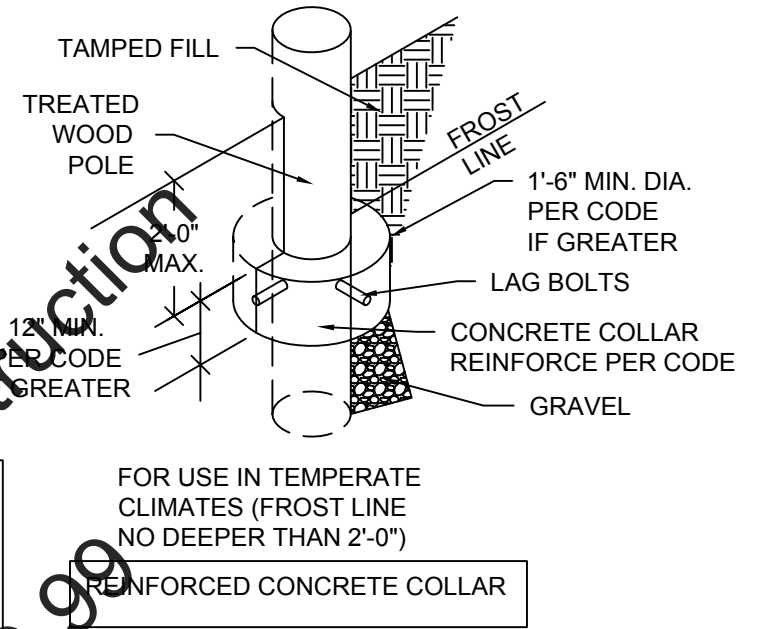
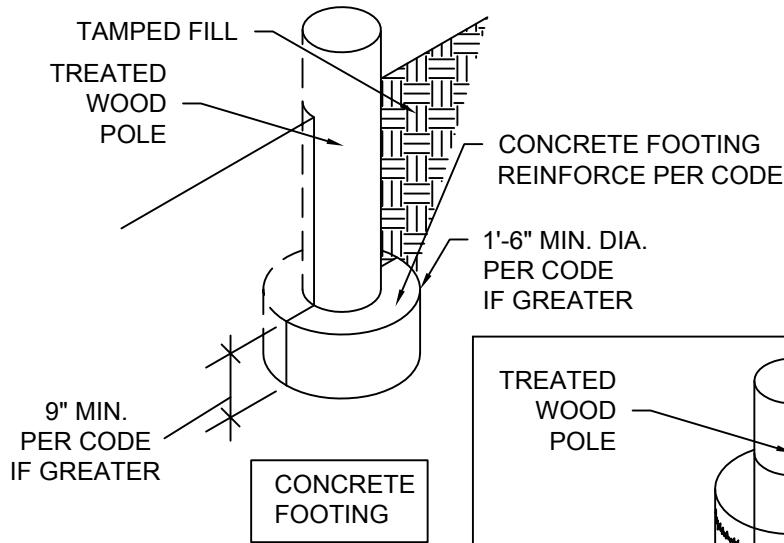
OPTIONAL WINDOW FRAME DETAIL
(OUTSIDE ELEVATION VIEW)
SCALE 1/4" = 1'

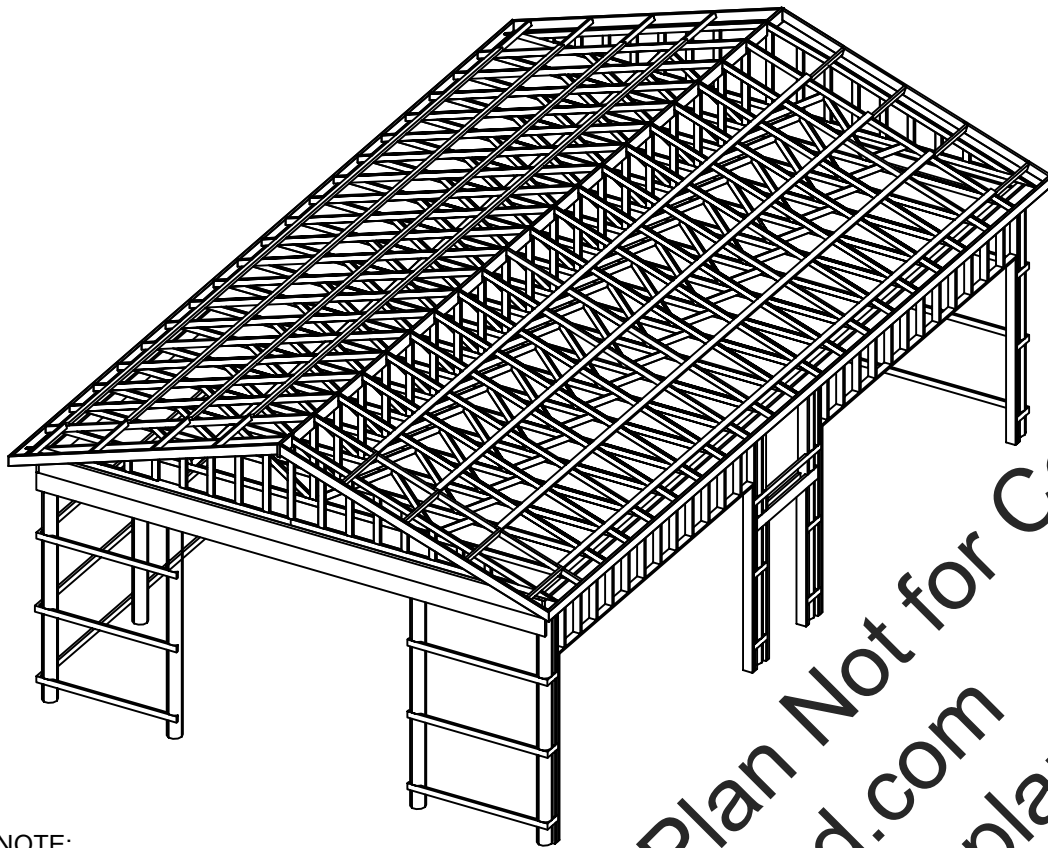
- NOTE:
1. ILLUSTRATED WINDOW ROUGH OPENING IS 3'-0"x2'-6".
 2. WINDOW HEADER HEIGHT IS 6'-10".
 3. ADJUST ROUGH SILL HEIGHT AND OPENING WIDTH TO SUIT DESIRED WINDOW PER MANUFACTURERS INSTRUCTIONS.
 4. WINDOW FRAME MATERIALS ARE NOT ON BILL OF MATERIALS LIST.



SECTION E-E
SCALE 1/2" = 1'

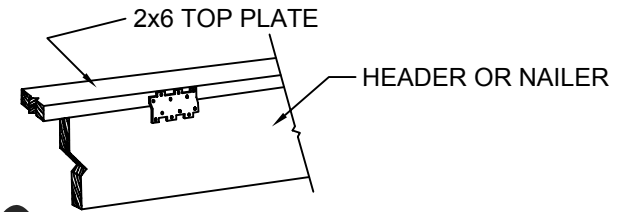






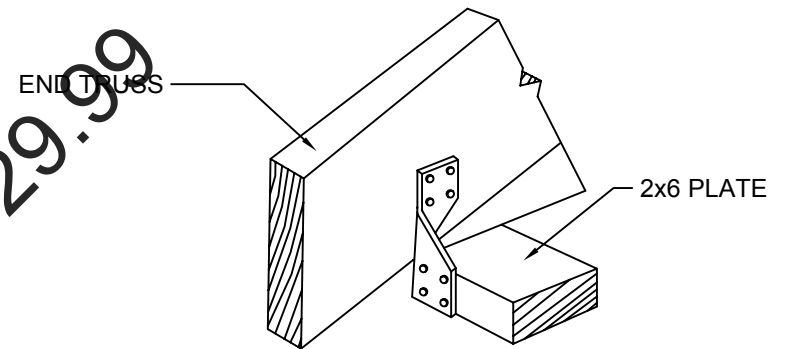
NOTE:
 FRAME PICTORIAL IS ONLY TO GIVE A GENERAL IDEA OF HOW FRAME PARTS FIT TOGETHER IT IS NOT AN ACTUAL REPRESENTATION OF THE FINISHED FRAME. USE THE DETAILED DRAWINGS FOR ACTUAL CONSTRUCTION INFORMATION.

FRAME PICTORIAL
 SCALE NTS



NAIL 2x6 TOP PLATES TO HEADERS AND NAILERS WITH 16d NAILS @ 12" SPACING FRONT, BACK, AND SIDES. ADD LPT4 ON FRONT BACK AND SIDES @ 4' O.C.

SIMPSON STRONG TIE
 LPT4 INSTALLATION
 SCALE NTS



SIMPSON STRONG TIE
 H3 INSTALLATION
 SCALE NTS

DOOR AND WINDOW SCHEDULE

SYMBOL	SIZE	DESCRIPTION	QTY
①	3'x6'6"	EXTERIOR ENTRY DOOR	2
②	16'x9'	SECTIONAL GARAGE DOOR	2
③	10'x10'	BIPARTING SLIDING DOOR	1

NOTE:
 WINDOWS ARE TO BE INSTALLED AT OWNERS OPTION. THE NUMBER, SIZE, STYLE AND PLACEMENT ARE AT OWNERS OPTION.

General Specifications and Notes

General:

Construction shall meet all applicable codes and ordinances.

Site Work:

1. Make sure setbacks are in compliance with local building codes.
2. All stumps, roots, and organic matter shall be removed from the soil in the area of the building.
3. Lot must be graded to insure proper drainage away from building.
4. Soil should not be a highly expansive soil type without having a soil report performed by a soils engineer and receiving approval from local building department to construct building on said type soil.

Concrete:

1. All slabs are to be 4" concrete over 4" gravel unless otherwise noted on the plans.
2. Concrete to be ACI 301-66, Type II cement, 2500 psi at 28 days, 5" maximum slump.
3. Reinforcing to be ASTM A 615-Bars with $F_y=60$ ksi lap 30 diameter minimum at splices or weld per ACI Std. in footings.
4. Reinforcing to be ASTM A 185-welded wire mesh in slabs.

Roof Framing:

1. For spans and dimensions refer to plans.
2. Use Simpson or equal anchors at each truss to wall connection.
3. Use Simpson or equal anchors at plate to beam or plate to nailer joints.

General framing: (Douglas Fir)

1. Exterior wall framing to be as shown on drawings.
2. Framing lumber shall be Douglas Fir construction grade Fb 1450 or better unless otherwise noted.
3. Use redwood or pressure treated posts and use redwood or pressure treated lumber for beams closer than 8" to the ground and for any other use where the lumber is closer than 8" to the ground or on cement.

Door and window framing:

1. Door and window manufacturer specified rough opening dimensions shall take precedence over drawing rough opening dimensions if there is a conflict.

BILL OF MATERIALS

Size	Item	Count	Un
2x6-8ft+	nailers	20	ea
2x6-16ft+	nailers	12	ea
2x6-16ft+	fir plate	3	ea
2x6-8ft+	fir plate	5	ea
2x6-18ft+	fir plate	2	ea
2x6-16ft+	nailers-pressure treated	9	ea
2x6-8ft+	nailers-pressure treated	15	ea
2x12"	door header	14	ft
2x12-16ft	beam	6	ea
2x12-12ft	beam	2	ea
2x12-8ft	beam	9	ea
1 3/4x14"-16'-7"	lvl header beam	4	ea
2x6"-17 1/2"	fir stud (cripple)	28	ea
2x6-18	garage door header - lumber	4	ea
12x3x3/4	metal siding	49	ea
2x4-10ft	biparting door frame-pressure treated	0	ea
2x4-12ft	biparting door frame-pressure treated	4	ea
1x4-16ft+	garage door casing	71	ft
1x6	garage door jamb	71	ft
TR-0	roof truss	19	ea
TR-1	roof truss-reduced gable, end	2	ea
2x8"-16'+	ridge board - lumber	41	ft
2x8"-42'	fascia - lumber	2	ea
2x8"-14'	rafters - lumber	4	ea
2x4-16'+	rafters - lumber	140	ft
2x4-3'	lookout rafters - lumber	32	ea
2x4-18'+	purlin rafters - lumber	32	ea
	vented ridge cap	42	ft
	roofing metal	1151	sqft
	gable fascia	55	ft
	eave fascia	84	ft
	metal drip edge	139	ft
36x80x1 3/4R	ext. hinged door - prehung	2	ea
2x4-12ft	back entry door frame-pressure treated	2	ea
2x4-10ft	back entry door frame-pressure treated	2	ea
2x4-8ft	back entry door frame-pressure treated	2	ea
2x6-12ft	front entry door frame-pressure treated	2	ea
2x6-8ft	front entry door frame-pressure treated	2	ea
1x6-8ft	front entry door frame-pressure treated	2	ea
16'x9'	garage door	2	ea
2x6-12ft	garage door post-pressure treated	8	ea
2x6-10ft	garage door trimmer-pressure treated	4	ea
2x6-3ft	garage door spring support	2	ea
8" dia. x 16ft min.	posts, pressure treated	14	ea

Warning:

This is a computer generated estimate of the materials needed. It is not to be construed as an accurate or complete list of materials. For a more accurate list of materials needed, you will have to calculate it by hand.